

# ENHANCING DEVELOPMENTAL PEDIATRIC SCREENING

AHMAD AL-MUSA, EILEEN FISK, YAQUELIN OCANA, CARMEN SANTANA, MARY LUCY GUIFFRIDA, TEJAL KULKARNI, MARK ALEXAKOS,



## Introduction & Background

- The urgency to comply with state regulations (required 100% of all pediatric physical visits)
- The pediatric developmental screenings lacked a unified/standardized system across the organization.
- Patients that were due for developmental screening were not being offered the screening due to a lack of team training and support

## Team

- Lead Pediatric Primary Care Provider
- Quality Improvement Integrated Project Manager
- Lead Pediatric Behavioral Health Provider
  - Lead Nurse Manager on Pediatrics
- Manager of Patient Access and Support Services
  - Data Analyst/Epic Report Writer
  - Chief Behavioral Health Officer

## Organizing Sentence

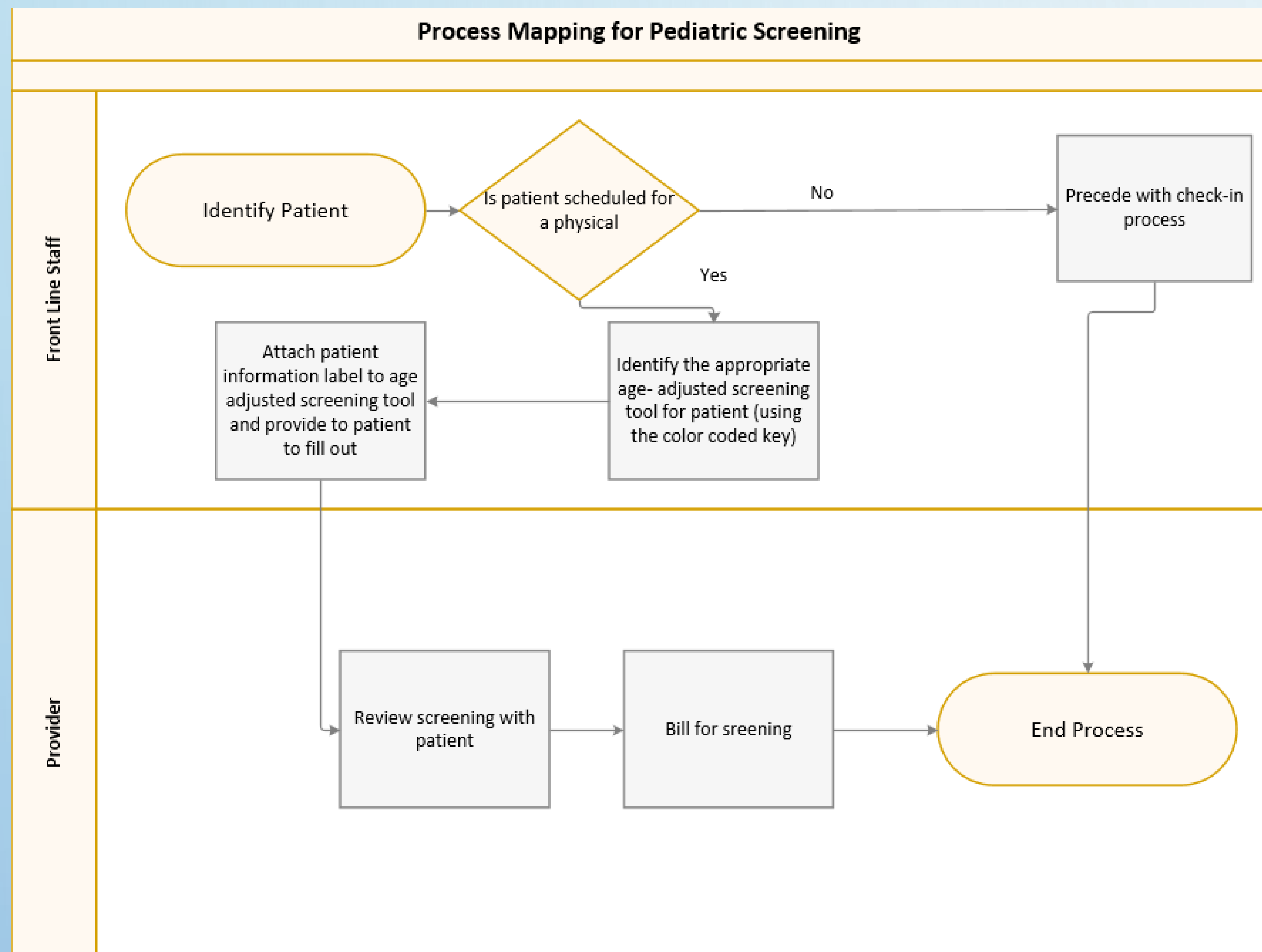
We are organizing Lynn Community Health Center's approach towards delivering pediatric developmental screenings in an attempt to reach 80% by September 2018 by rearranging roles and responsibilities of both clinical and non-clinical staff

### Hypothesis

"If we can distribute the responsibilities of the pediatric developmental screening process amongst clinical and non-clinical" staff, then we would be able to deliver more screens to patients

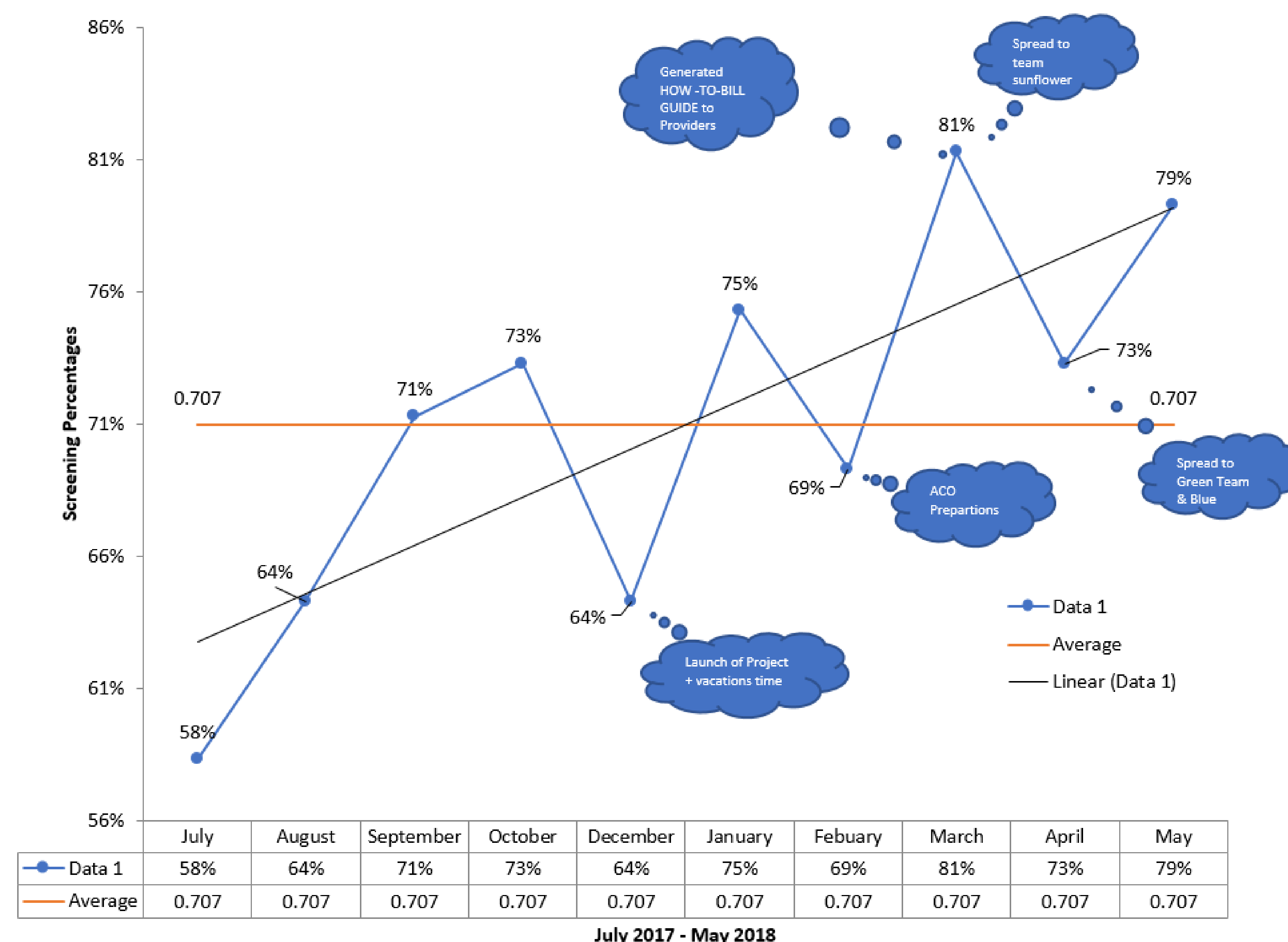
## Proposed Workflow

Process Mapping for Pediatric Screening



## Pilot Project

Pediatric Department(Pilot Study)-Run Chart



## Project Timeline and Events

- Formulate a steering committee -(11/15/17)
- Redesign "Physical Slips" at Central Registration to make it more efficient for staff (12/12/2017)
- Color code the screening tools to minimize confusion efforts amongst frontline (12/12/2017)
- Educate front line and central registration staff on the importance of the screening process (02/08/2018)
- Establish and conduct multiple Physical-slip audits to identify system gaps (1/2017, 2/2018)
- Analyze monthly screening rates for the Pediatrics dept. (Ongoing).
- Spread to 269 when screening efforts in pediatrics reach at least 80% (3/2018)
- Develop a provider how-to guide on billing and process engagement (03/12/2018)
- Demonstrate improvement efforts at Primary Care Leads Meeting (03/16/2018)
- After complete spread, create organizational dashboard to help visualize departmental improvement (5/09/2018)

## Measures

Measures are based off of completed and billed pediatric physical visits. Pediatric Screening tools include PEDS, MCHAT, PEDS, PSC, (parent), Y-PSC and Adolescent Packet (Craft/PHQ9 combo)

## Key Learnings

- Only 5 primary care teams utilize the pediatrics screening process (Ped, Blue, Purple, Green and Sunflower) and currently only Blue and Pediatrics utilize their front-line staff for the screening process
- Providers are not aware how to document the screening results and proper billing in EPIC
- Front line staff are not aware of the importance of such screening tools

## Contact Us

- Ahmad AL-Musa
- [aalmusa@lchcnet.org](mailto:aalmusa@lchcnet.org)
- Lynn Community Health Center
- 20 Central, Lynn 1907

SCREENING RATES

