

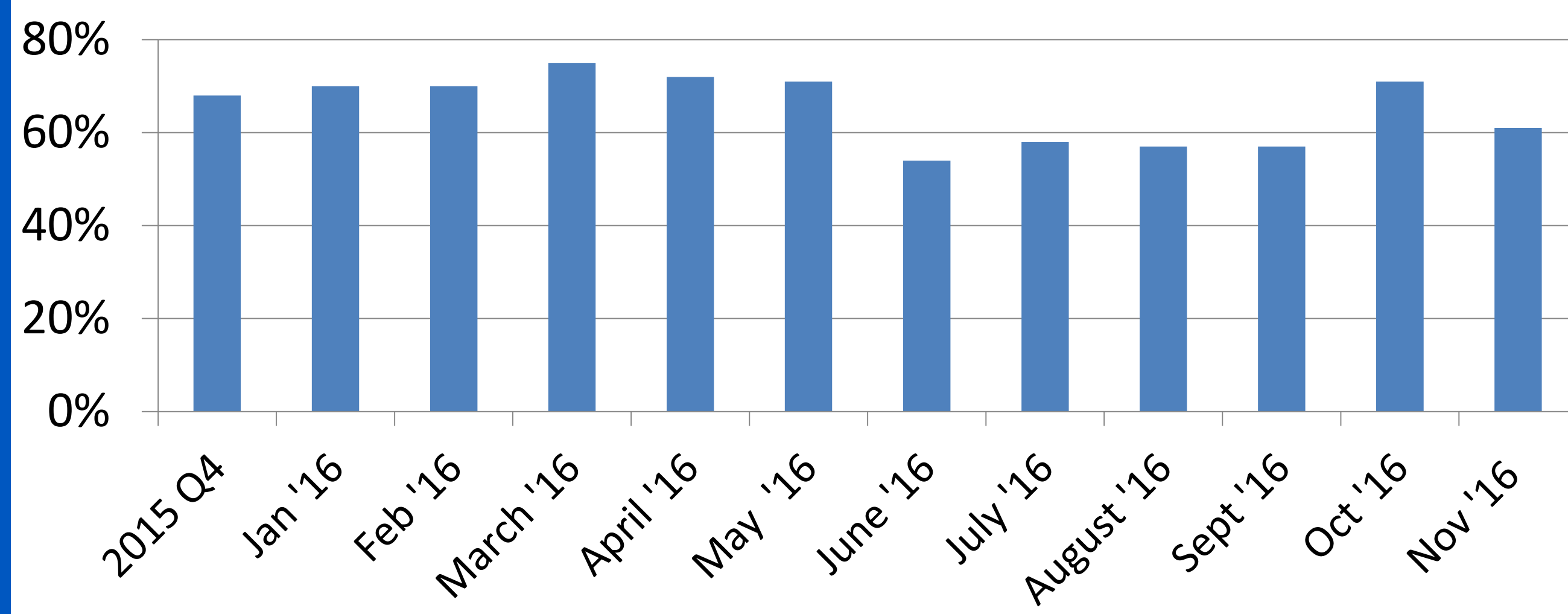
The Impact of the Anesthesiologist Work Flow Upon First Case Operating Room Entry

Samantha Mullis Jansson MD, FACC
 DIRECTOR OF QUALITY IMPROVEMENT AND PATIENT SAFETY
 Montefiore Medical Center, Department of Anesthesiology

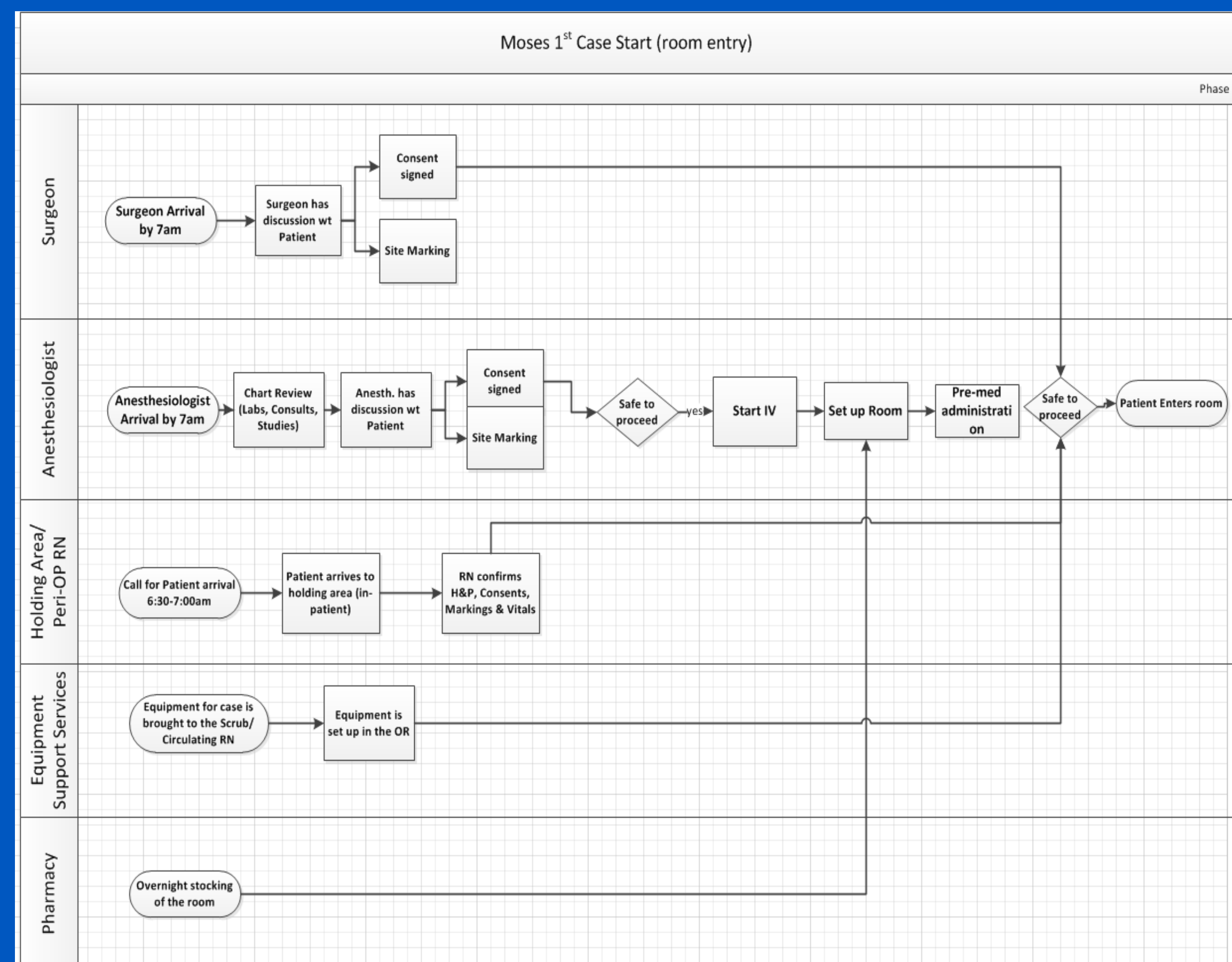
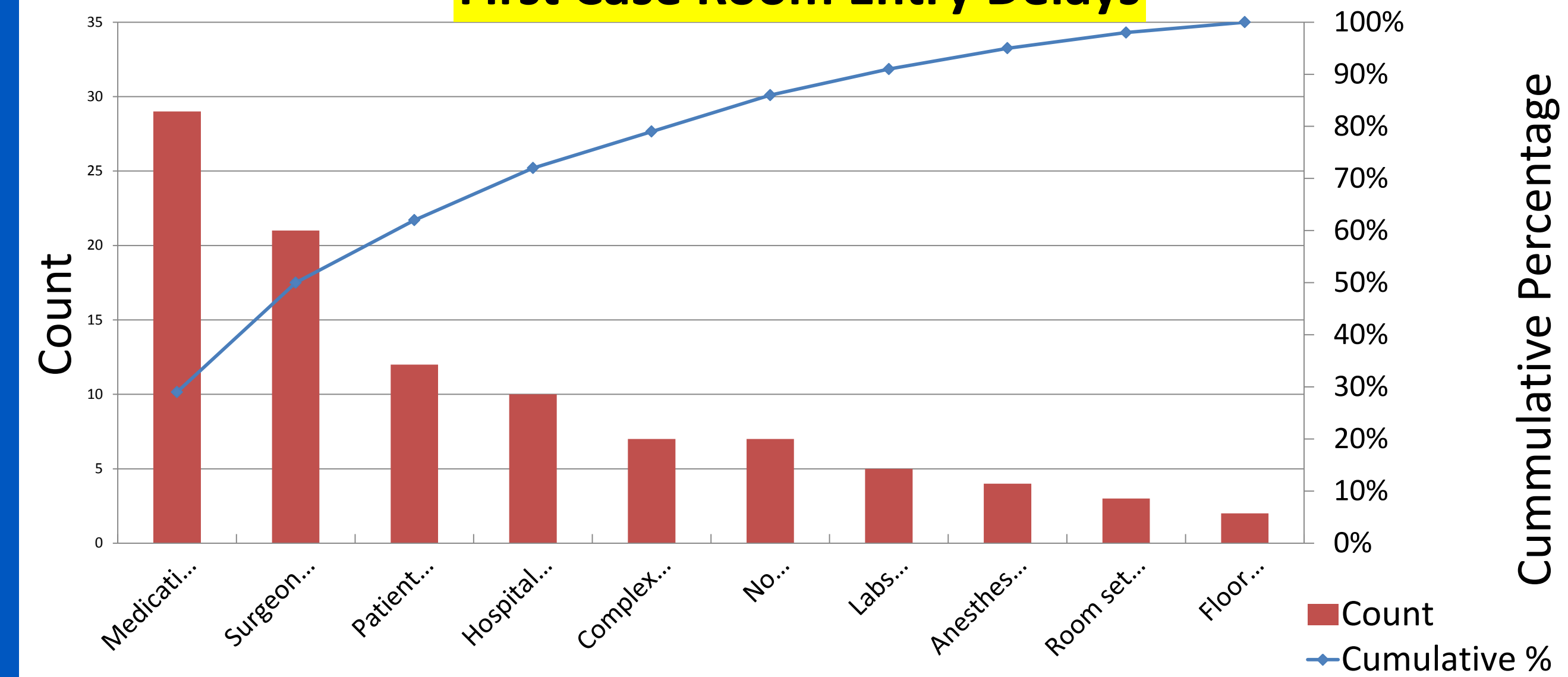
BACKGROUND

- The percentage of the patients who arrive in the operating room by scheduled First Case start time at Moses Campus in 2016 has ranged from 54% -75%.
 - First Case room entry assumes 7:30 AM Monday-Thursday start time and 9:30 AM Friday start time
- Source: Montefiore Epic/PICIS data

Moses OR First Case On-Time Room Entry Statistics

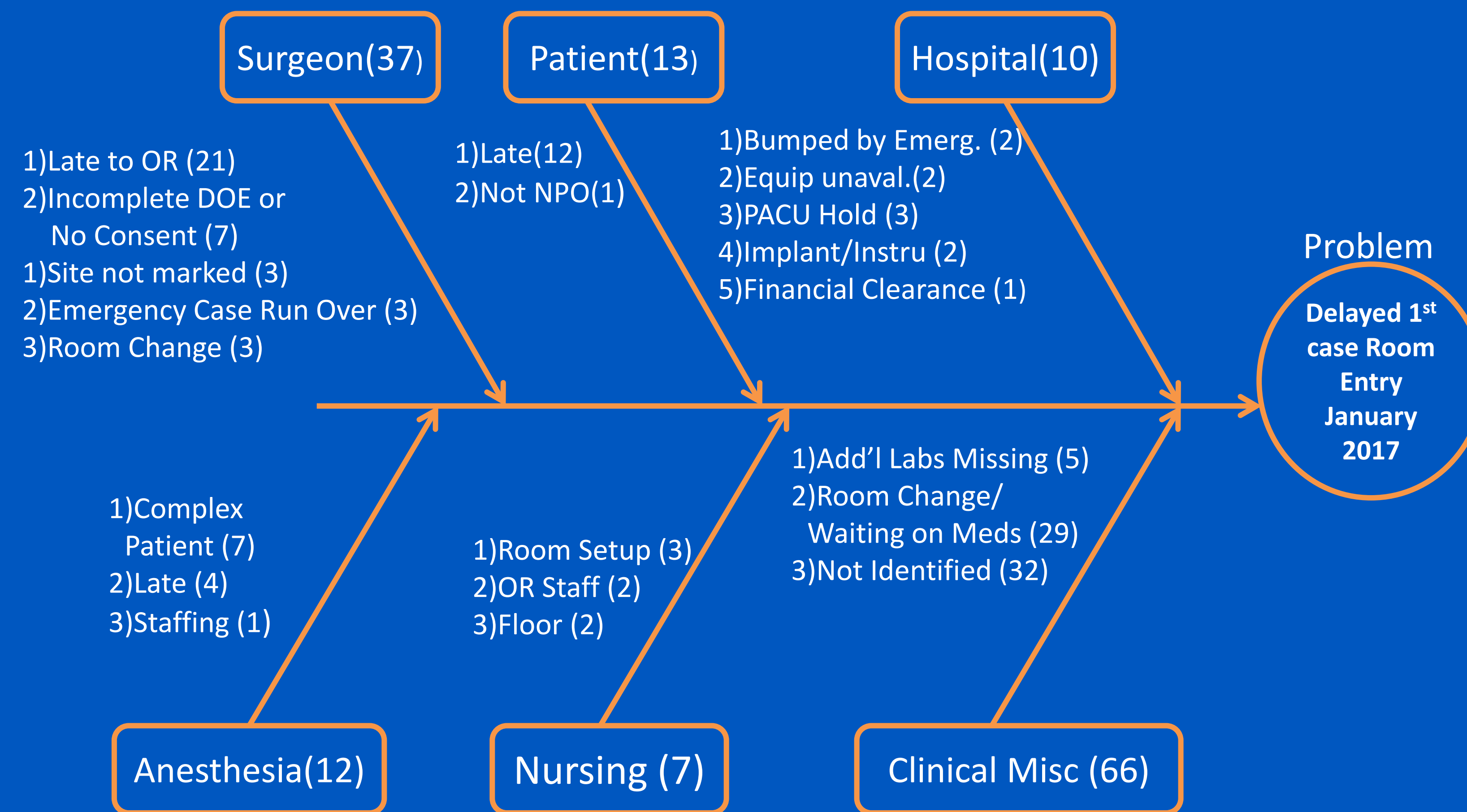


First Case Room Entry Delays



AIM

- Improve 1st O.R. case room entry at Moses campus to 72% by December 2017



- STRUCTURE**
- OR Rooms
 - Admission logistics
 - Surgeons, Technicians, Transporters, Floor and ASU Nurses, Anesthesiologists
 - OR surgical equipment
 - OR Anesthesiology equipment
 - Vendors

- PROCESS**
- Patient arrival
 - Patient prep in ASU
 - Surgeon arrival
 - Surgical consent
 - Possible surgical site marking
 - Anesthesiologist arrival
 - Anesthesia room set up and medication access
 - OR surgical set-up

OUTCOME

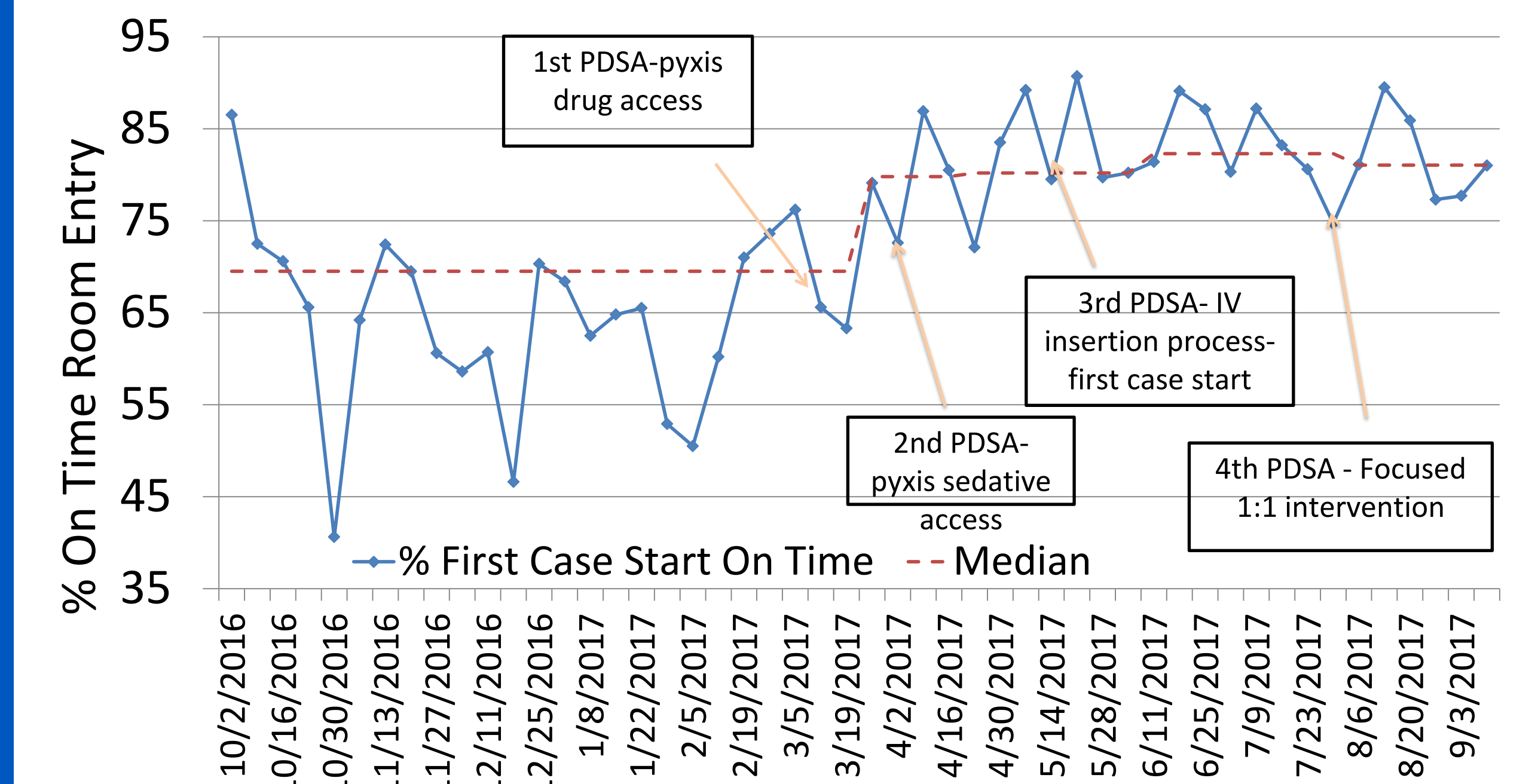
On time 1st case start (room entry)

DISCUSSION

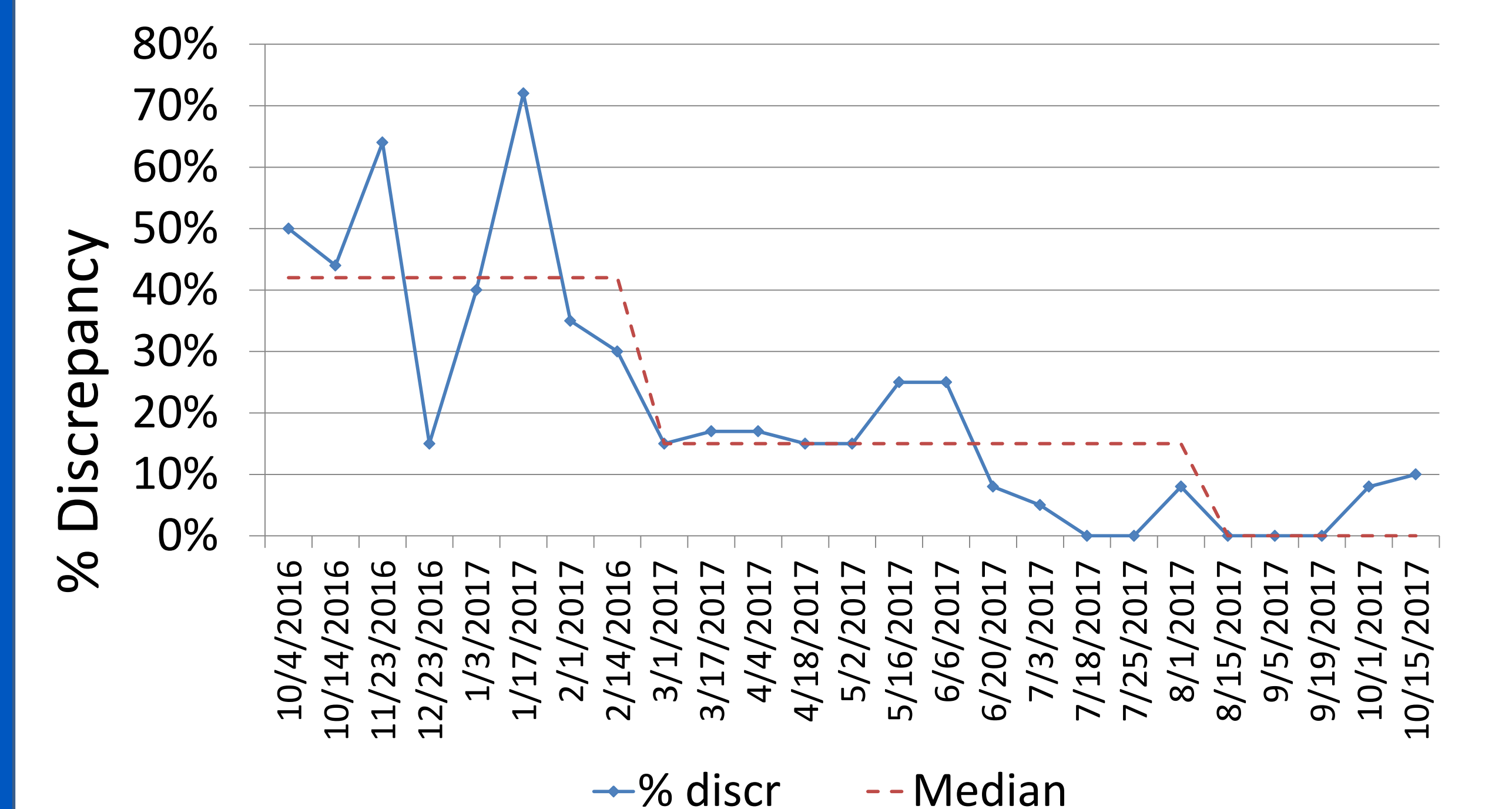
PDSA Cycles

- Modification of General OR medication retrieval and unused drug return process
- Install small Pyxis unit in CHAM ASU area and stock with PO versed allowing the pediatric anesthesiologists to access and administer the medication themselves.
- Eliminated insistence that IV line be inserted in ASU prior to patient being brought into the room.
- Preemptive OR identification of delays during ASU rounds by 7:15AM and early intervention initiation.

Outcome Measure Following PDSA Cycles



Percentage of Moses OR Opioid Disposition Discrepancies



RESULTS

- Following completion of the 4th PDSA cycle, the Moses 1st case OR entry time in 2018 has improved to 78% - 83%.