



“Moving Toward Increased Patient Safety and Decreased Risk through Data Analysis and Actionable Recommendations”

Analyzing data with a focus on boosting efforts to mitigate risk and advance patient safety

Risk Management composite metric was developed for the purpose of having a single data value associated with health center performance in patient safety related activities.

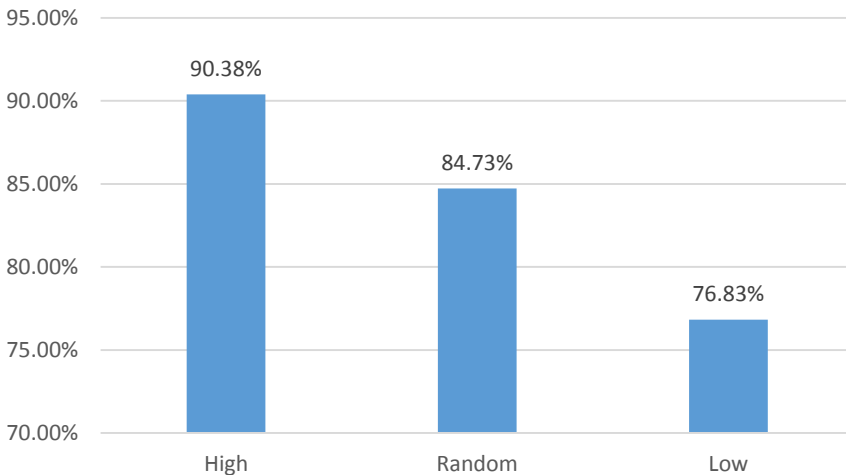


The risk management metric was applied to 45 health centers. The sample was comprised of 15 known low performing health centers with a history of patient safety incidents, 15 high performing health centers, and 15 selected at random.



Health centers in the “high performance” sample scored the highest cumulative average at 90.38 % health centers in the “low performance” sample had a cumulative average of 76.83% and the “random” sample scored a cumulative average of 84.73%.

Risk Management Performance Metric



Next Steps: Use the metric across the health center program to identify health centers at risk for patient safety incidents